

Overview

The MAX-HT04 Upgrade Kit (FG 2178-31) consists of four 400GB hard drives (HDDs).

MAX HT-04 Home Theater Servers can be upgraded to 2.4TB capacity by adding an Upgrade Kit of four 400GB hard disk drives (HDDs), increasing its storage capacity by nearly double.

Further, two kits - eight 400GB HDDs can be added to upgrade to 3.6TB capacity.

IMPORTANT - Because MAX servers utilize a RAID disk management system, some storage space is consumed to accommodate the RAID system. The following table indicates the storage space available:

	MAX-HT04	MAX-HT04 + 1 Upgrade Kit	MAX-HT04 + 2 Upgrade Kits
Content Storage	1.2 TBs	2.4 TBs	3.6 TBs
Max # of DVDs	250	500	750

Notes:

- The number of DVDs is based on an average of 4.8 GB per DVD.
 - DVD capacity is based on typical commercial DVDs.
 - DVD size is based on total DVD image, not the length of the movie.
- The actual server capacity will vary depending on specific mix of DVDs and CDs in the library.*

MAX-HT04 Upgrade Kit (FG 2178-31)

The MAX-HT04 Upgrade Kit consists of four 400GB HDDs (FIG. 1).



FIG. 1 MAX HT04 Server Upgrade Kit

Only HDDs provided by AMX can be used as replacements in HT servers, and in order to replace a HDD in an HT server, the drive must be installed and authenticated according to the steps outlined in this document.

There are several operations that are required to successfully replace an HDD in an HT server, all of which are described in this document:

1. Add each HDD's serial number to the system, via the MAX Admin Menu.
2. Physical installation of the HDDs.
3. Generate RAID discs to support the new HDDs.

Step One: Add the New HDDs to the System

Before an HDD is physically installed in an HT server, it must first be added to the system via the MAX Admin Menu (FIG. 2).

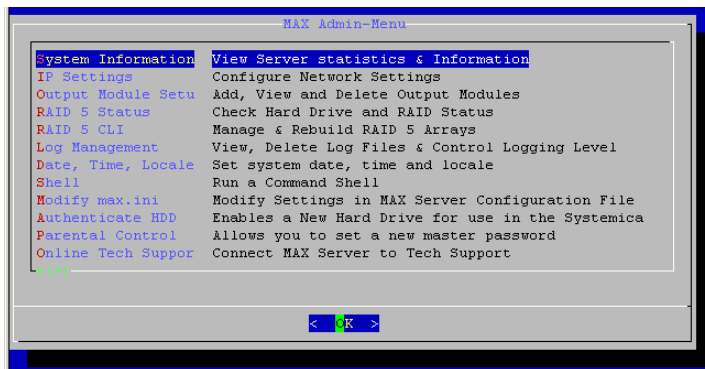


FIG. 2 MAX Admin Menu

There are two pieces of data that you must provide to complete the process of adding the replacement HDD: The new HDD's **Serial Number**, and **Key**.

- The 12-digit *Serial Number* is printed on a label placed on the top of the HDD, located directly beneath the barcode (see FIG. 1).
 - The 16-digit *Key* is printed on a slip of paper included with the HDD.
- Be sure to record the Serial Number before inserting the new drive into the server.

Note: To access the MAX Admin Menu, you can either connect a VGA monitor and PS/2-style keyboard directly to the server using the connectors on the rear panel, or you can use the Server Configuration option in WinMAX (located in the System Information tab) to establish a Telnet session with the server.

1. In the Admin Menu, select **Authenticate HDD** (FIG. 3).

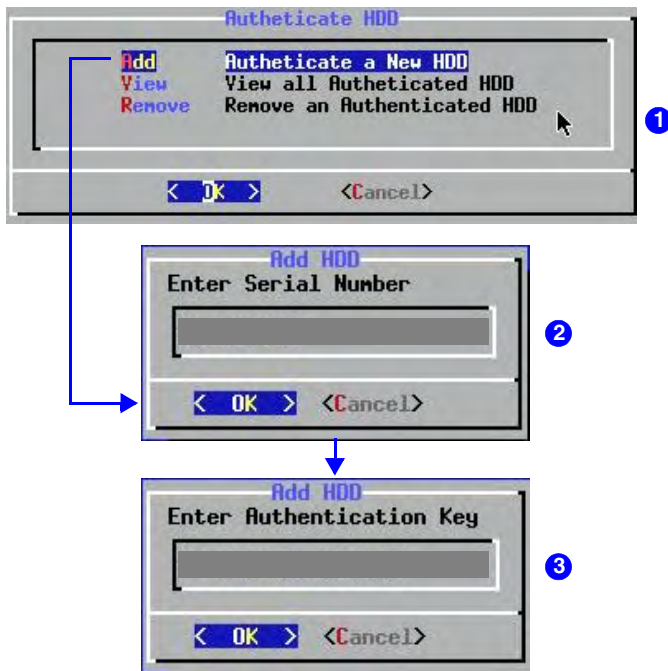


FIG. 3 Adding an HDD to the system

2. Select **Add**, then select **OK** to proceed to the **Add HDD** window.
3. Enter the **Serial Number** for the new drive.
 - The Serial Number for each HDD is printed on a decal placed on the top panel of the disk.
 - When entering the Serial Number, use the following syntax (*no quotes*): **"WD-WXXXXXXXXXX"**.
4. Enter the 16-digit **Key** supplied by AMX for this HDD (printed on a slip of paper included with each HDD).

Repeat these steps for the remaining three HDDs in the set.

Step Two: Install the New HDDs

Once the HDD serial numbers and keys have added to the system, you can physically install the new drives:

1. Lower the faceplate on the front panel of the server to access the HDDs (FIG. 4).



FIG. 4 MAX-HT Server (front panel)

2. Install the first HDD in the set into the next available slot. For example, if you are upgrading an HT04 to 2.2 TB, the first drive should be installed in to slot #5. In this case, the four HDDs in the Upgrade kit should occupy slot numbers 5,6,7, and 8.
 - a. To remove the drive tray, pull the latch forward to unlock the drive tray. Flip the hinged panel out and use it as a handle to gently pull the drive tray out of its slot (FIG. 5).

1 Pull the latch forward to unlock the drive tray



Drive number (silk-screen)

- 2 Carefully slide the tray out of its slot
- 3 Secure the new HDD to the tray
- 4 Slide the tray/disk assembly in until it snaps into place

FIG. 5 Removable drive tray assembly (front panel)

- b. Install and secure the new drive into the drive tray. The drive is secured to the tray with four screws on the bottom panel (FIG. 6).
 - c. Slide the replacement drive/tray assembly fully into the slot, and push the hinged latch back into its locked position. The LEDs on the front of the HDD should light to indicate that it has been connected and is communicating properly.
3. Return the faceplate to its locked position.

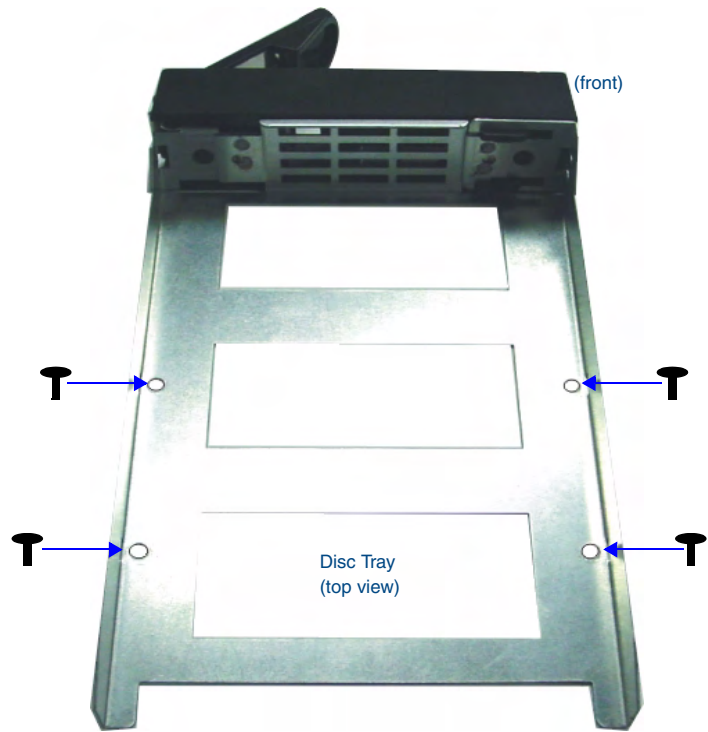


FIG. 6 Mounting the HDD in the Drive Tray

Step Three: Generate RAID Discs

1. In the MAX Admin Menu, select **Add Raid Disks**.
2. Select **OK**.

The server will rebuild the new drives and add it to the RAID array. There is no need to reboot the server; the new drives are ready to use.

Note: The drives on HT Servers are physically labeled with numbers on the front panel. HT04 Servers use drives labeled 1-4, and HT12 Servers use drives 1-12 (see FIG. 5).

However, the drives are listed in the RAID 5 Status window (of the Admin Menu) starting with zero (0). Therefore, note that drive "0" in the Raid 5 Status window equates to the drive labeled "1" on the front of the HT server. Remember that each drive number in the Raid 5 Status list is offset by one relative to the labels on the front of the HT server.